

Allatoona Lake

Allatoona Lake is the oldest multipurpose project in the Corps' South Atlantic Division. Preliminary site work began in 1941 but was discontinued by the outbreak of World War II. The dam was completed and placed into operation in January, 1950, at a cost of about \$31.5 million. The lake is located on the Etowah River, a tributary of the Coosa River, about 30 miles north of Atlanta. The dam

impounds run-off water from 1,110 square miles into a large, irregular lake. During periods of heavy rainfall, excess runoff is stored to alleviate floods in the lower Etowah Valley and to reduce flood heights at Rome, Georgia. During dry periods, stored water is released to supplement runoff for power production and to produce streamflow. Because the lake serves a large drainage area and is relatively small, the level of the lake may fluctuate greatly. Daily increases of three to four feet are not uncommon following heavy rains with an increase of 20 feet recorded in one week's time several years ago.



US Army Corps of Engineers
Mobile District

	RECREATIONAL FACILITIES																			
	Picnic Shelters	Camping	Hootlups	Trailer Dump Station	Boat Ramp	Handicapped Access	Group Camping	Grills & Tables	Swimming Area	Fishing Area	Toilet	Laundry	Use Fee	Hiking Trail	Biking Trail	Cabin Rental	Disc Golf Course	No Alcohol	No Pets	
CAMPING																				
4 McKaskey Creek Campground	•	•	•	•	•	•	•	•	•	•	•	•	•	•	•	•	•	•	•	•
7 Upper Stamp Creek Campground	•	•	•	•	•	•	•	•	•	•	•	•	•	•	•	•	•	•	•	•
10 Sweetwater Creek Campground	•	•	•	•	•	•	•	•	•	•	•	•	•	•	•	•	•	•	•	•
18 Victoria Campground	•	•	•	•	•	•	•	•	•	•	•	•	•	•	•	•	•	•	•	•
20 Payne Campground	•	•	•	•	•	•	•	•	•	•	•	•	•	•	•	•	•	•	•	•
27 McKinney Campground	•	•	•	•	•	•	•	•	•	•	•	•	•	•	•	•	•	•	•	•
32 Old Highway 41 #3 Campground	•	•	•	•	•	•	•	•	•	•	•	•	•	•	•	•	•	•	•	•

	RECREATIONAL FACILITIES																			
	Picnic Shelters	Camping	Hootlups	Trailer Dump Station	Boat Ramp	Handicapped Access	Group Camping	Grills & Tables	Swimming Area	Fishing Area	Toilet	Laundry	Use Fee	Hiking Trail	Biking Trail	Cabin Rental	Disc Golf Course	No Alcohol	No Pets	
DAY USE																				
1 Project Mgm't Office/Visitor Center								•												
2 Cooper Branch #1			•					•												
2 Cooper Branch #2			•					•												
6 Upper Stamp Creek								•												
10 Sweetwater			•					•												•
11 Knox Bridge								•												
18 Victoria								•												
19 Kellogg Creek								•												•
20 Payne Ramp								•												•
22 Galt's Ferry			•					•												•
30 Tanyard Creek Ramp								•												•
34 Old Highway 41 #1								•												•
39 Blockhouse								•												•
41 Riverside Park								•												•
42 Cooper's Furnace			•					•												•

	RECREATIONAL FACILITIES																			
	Picnic Shelters	Camping	Hootlups	Trailer Dump Station	Boat Ramp	Handicapped Access	Group Camping	Grills & Tables	Swimming Area	Fishing Area	Toilet	Laundry	Use Fee	Hiking Trail	Biking Trail	Cabin Rental	Disc Golf Course	No Alcohol	No Pets	
STATE OPERATED, COUNTY OPERATED AND CITY OPERATED AREAS																				
3 Bartow Gatewood Park	•	•	•	•	•	•	•	•	•	•	•	•	•	•	•	•	•	•	•	•
9 Allatoona Wildlife Mgm't Area	•	•	•	•	•	•	•	•	•	•	•	•	•	•	•	•	•	•	•	•
12 Boling Park/ City of Canton	•	•	•	•	•	•	•	•	•	•	•	•	•	•	•	•	•	•	•	•
13 Field's Landing Park	•	•	•	•	•	•	•	•	•	•	•	•	•	•	•	•	•	•	•	•
16 Cherokee Mills	•	•	•	•	•	•	•	•	•	•	•	•	•	•	•	•	•	•	•	•
23 Bartow Carver Park	•	•	•	•	•	•	•	•	•	•	•	•	•	•	•	•	•	•	•	•
24 Red Top Mtn. State Park	•	•	•	•	•	•	•	•	•	•	•	•	•	•	•	•	•	•	•	•
28 Clark Creek North Campground	•	•	•	•	•	•	•	•	•	•	•	•	•	•	•	•	•	•	•	•
29 Clark Creek South Boat Ramp	•	•	•	•	•	•	•	•	•	•	•	•	•	•	•	•	•	•	•	•
35 Acworth Beach	•	•	•	•	•	•	•	•	•	•	•	•	•	•	•	•	•	•	•	•
36 Cobb Regional Park	•	•	•	•	•	•	•	•	•	•	•	•	•	•	•	•	•	•	•	•
38 Allatoona Creek Park	•	•	•	•	•	•	•	•	•	•	•	•	•	•	•	•	•	•	•	•
43 Dallas Landing	•	•	•	•	•	•	•	•	•	•	•	•	•	•	•	•	•	•	•	•
37 Proctor Landing	•	•	•	•	•	•	•	•	•	•	•	•	•	•	•	•	•	•	•	•
44 Blankets Creek Bike Trails	•	•	•	•	•	•	•	•	•	•	•	•	•	•	•	•	•	•	•	•
45 Rope Mill Park	•	•	•	•	•	•	•	•	•	•	•	•	•	•	•	•	•	•	•	•
46 J.J. Biello Park	•	•	•	•	•	•	•	•	•	•	•	•	•	•	•	•	•	•	•	•

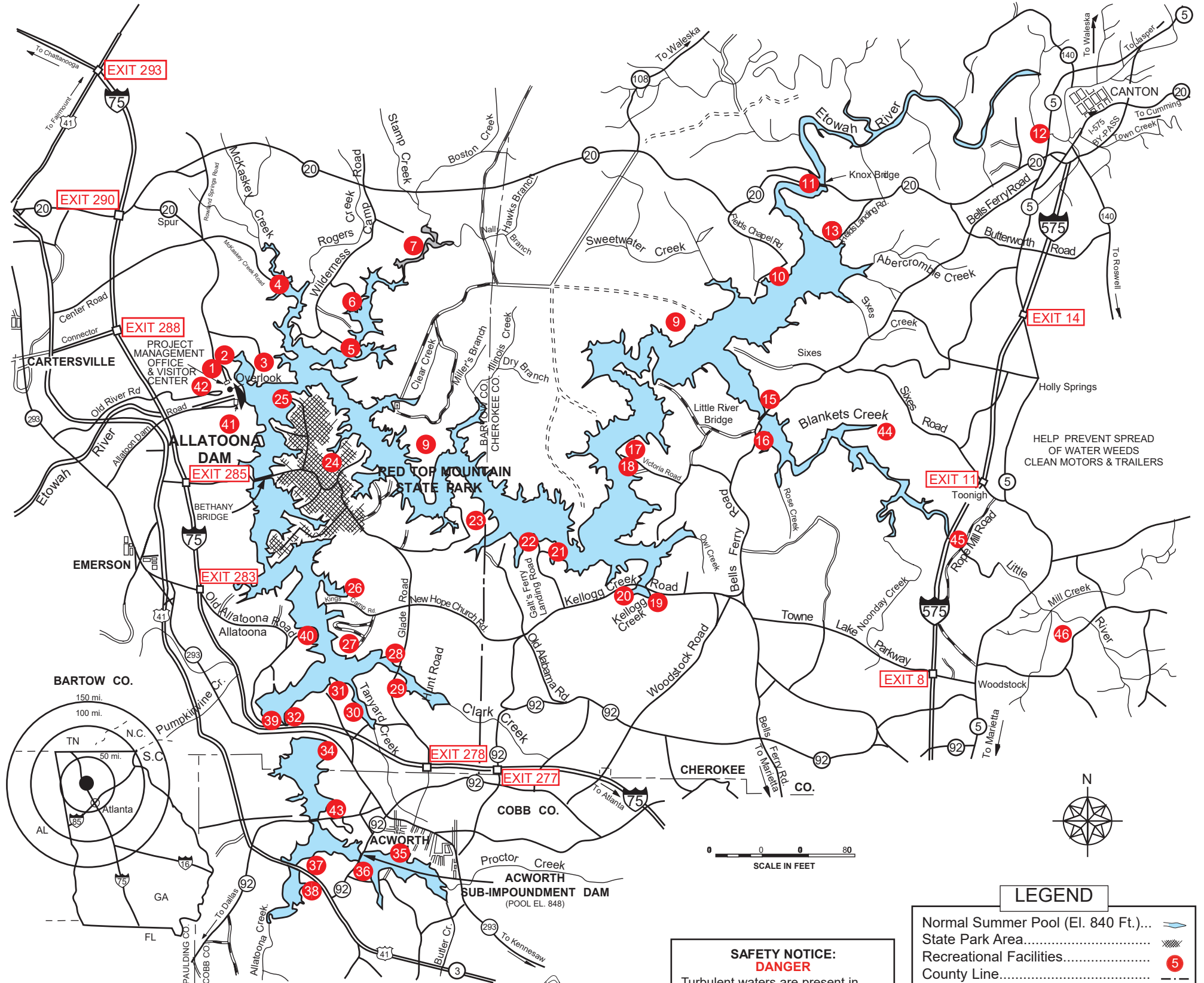
MARINAS	
5 Wilderness Camp	•
15 Little River Marina	•
17 Victoria Harbour	•
21 Harbor Town	•
25 Park Marina	•
26 Glade Marina	•
31 Holiday Marina	•
40 Allatoona Landing	•

facebook



PLEASE VISIT US AT:

www.sam.usace.army.mil/
Missions/CivilWorks/Recreation/
AllatoonaLake.aspx



Your Drinking Water comes from Allatoona Lake. Please Don't Pollute It!

When Wading, Swimming, or Boating, Wear a Coast Guard Approved Life Preserver!

UNDERWATER HAZARDS
There are submerged stumps, logs, fences, and rocks in the lake. Be especially watchful for obstructions near the surface from November to February, when the lake is usually at its lowest level.



Lake Information: 678-721-6700
Campground Reservation: 1-877-444-6777
Lake Level Information: 770-386-0549
Generation Schedule: 706-334-7213

SAFETY NOTICE: DANGER
Turbulent waters are present in areas immediately above and below all locks and dams. Extreme caution must be exercised. There must be strict compliance with all posted signs and other safety rules.

LEGEND	
Normal Summer Pool (El. 840 Ft.)...	
State Park Area.....	
Recreational Facilities.....	
County Line.....	
Roads, Paved.....	
Roads, Gravel.....	
Roads, Graded.....	
Roads, Unimproved.....	
Full Highway Interchange.....	

http://www.recreation.gov
BUILDING STRONG®